

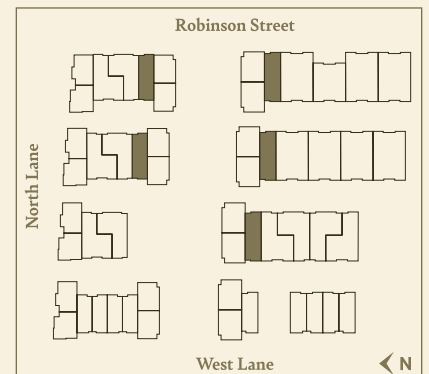
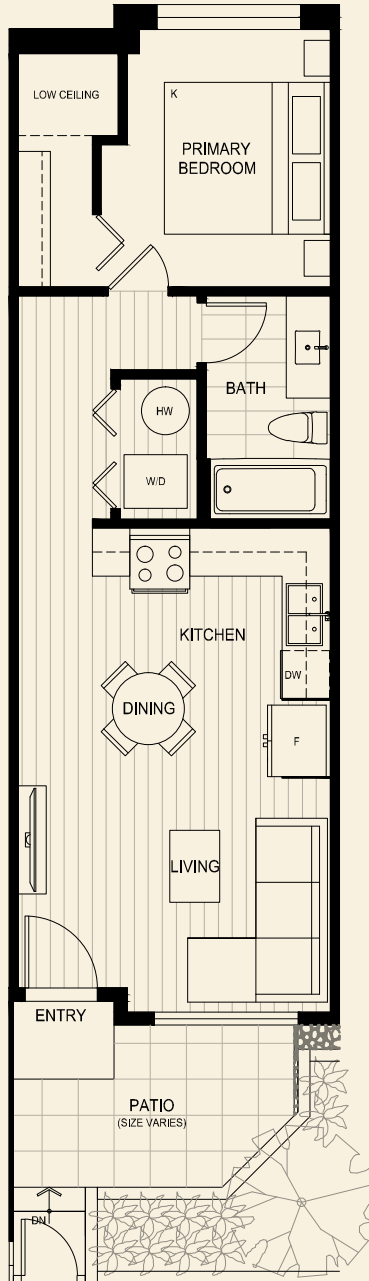
The Robinsons

PARKSIDE COLLECTION

Plan H

1 Bed, 1 Bath

Interior: 576 Sq Ft | Exterior: 90 – 145 Sq Ft



LiveAtTheRobinsons.ca

The homes at The Robinsons Parkside Collection are built by the developer WGP Seaton Development LP. The builder reserves the right to make modifications and changes should they be necessary. Select upgrades may cause ceiling drops. Dimensions, sizes, specifications, layouts, and materials are approximate only and subject to change without notice. Outdoor square footage, landscaping, stairs, and landings vary and may not necessarily reflect the floorplan portrayed above. E.&O.E.