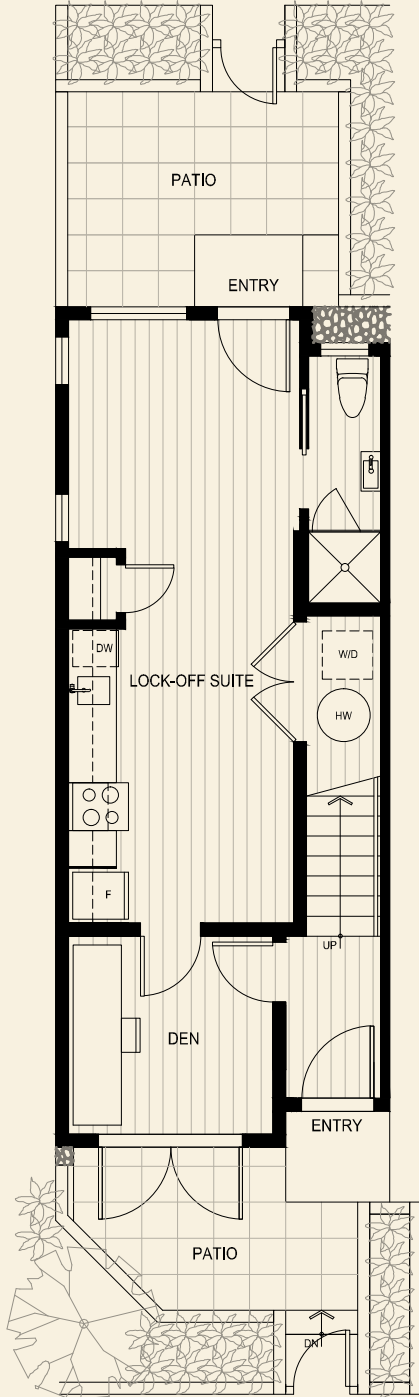


PARKSIDE COLLECTION

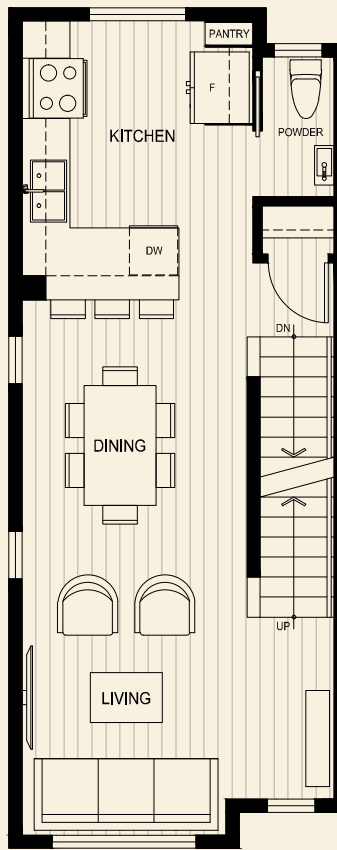
Plan

2 Bed, 3.5 Bath + Lock Off + Den

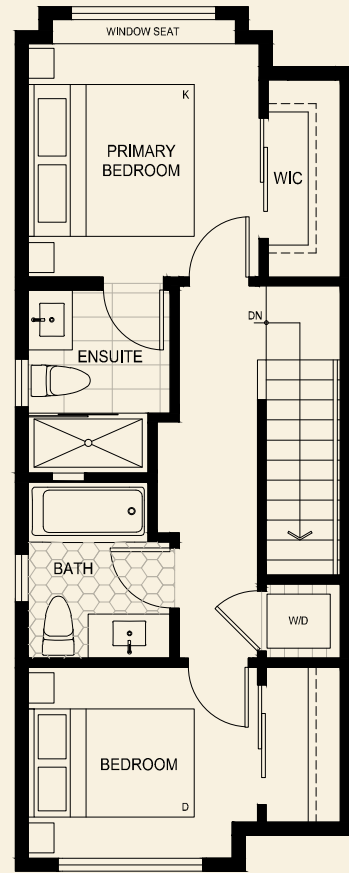
Interior: 1431 Sq Ft | Exterior: 199 Sq Ft



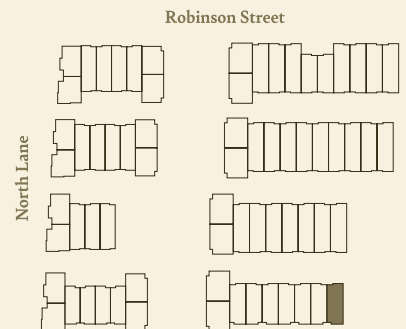
Main Level



Second Level



Upper Level



Robinson Street

North Lane

West Lane

LiveAtTheRobinsons.ca

The homes at The Robinsons Parkside Collection are built by the developer WGP Seaton Development LP. The builder reserves the right to make modifications and changes should they be necessary. Select upgrades may cause ceiling drops. Dimensions, sizes, specifications, layouts, and materials are approximate only and subject to change without notice. Outdoor square footage, landscaping, stairs, and landings vary and may not necessarily reflect the floorplan portrayed above. E.&O.E.